



15 La Residence Information Pack

We hope the details below will provide you with everything you need to know to help you get the most out of your stay at 15 La Residence. If however you can't find what you are looking for or have any questions please do feel free to get in touch using the details below:

CONTACT DETAILS

Name: Rob and Grace Horton
Mobile: +44 7710 541472
Email: info@15laresidence.com
Website: 15laresidence.com

THE APARTMENT

15 La Residence
First Floor
449 - 451 Avenue du Mont Paccard
74170 St. Gervais-Les-Bains
France

La Residence is located on the right hand side shortly after you enter St Gervais from La Fayette.

The apartment is on the first floor. Take the stairs from the main lobby to the first floor. Turn right and the entrance door to the apartment is directly in front of you, marked with a name plate.

Alternatively you can take the elevator from the main lobby to the first floor. In this instance turn left to find the entrance door to the apartment.

CAR PARKING

Free car parking is available on the road opposite the apartment or alternatively in the Tramway du Mont Blanc car park which can be found approximately 100m from the apartment building along the Rue du Mont Lachat opposite.

KEYS TO THE PROPERTY

Arrival: Keys are held in a key safe outside the front door of the property. The Yale safe can be located on the side of the cupboard outside of the front door. The code will be provided separately. A second set of keys is available inside the apartment.

Departure: On leaving the property please leave one key on the dining room table and one in the key safe.

Please remember to lock the doors and windows whenever you leave the property.

WIFI CODE

The WIFI code can be located on the underside of the wifi router on the television shelf in the living room.

ENTERTAINMENT

The apartment benefits from free WiFi throughout and the code can be located on the underside of the wifi router on the television shelf in the living room.

In addition to internet access, there are a number of entertainment options available via the television.

Astra-2 Satellite TV, available via the Sky box, provides the full set of UK Freeview television and radio channels plus a lot more.

Orange TV provides a large number of mainly French-speaking television and radio channels.

Apple TV allows you to rent or buy movies, television programmes, music and podcasts online via iTunes and stream them to the television. It also allows you to view your MacBook or iPad wirelessly on the television screen, although you also have the option of playing your MacBook or PC through the television by connecting it to the HDMI multiport on the television stand (please remember to bring your own cable if you might require this ability).

The DVD player allows you to watch films in the more traditional manner.

These television-based entertainment options are all connected and ready for use, although you will need to turn on the relevant base unit and select the correct input source on the television remote control. You will also need to become skilled at remote control juggling!

We would be grateful if you if you did not unplug any of the cables between components of the entertainment system, and of course please do not remove any of these components, cables or remote controls from the apartment.

There is also an iPod docking station in bedroom 1 which allows you to charge your iPod and play your music through the integrated speakers.

A great selection of good old-fashioned board games, books and DVDs are provided for you to enjoy during your stay. We would be grateful if you didn't remove these from the apartment, but if you are part-way through a book and would like to take it with you perhaps you could swap it for another.

RUBBISH AND RECYCLING

Rubbish and recycling points are located around the town. There is no collection from the apartment.

- In the Mont Blanc tramway carpark
- 100m along the road towards La Fayette
- Next to the Espace Mont Blanc building in the town centre

HEATING AND HOT WATER

The heating is controlled centrally within the building. To change the heating in the apartment please use the thermostatic valves on the radiators. (note that the heating is turned off during summer months).

The underfloor heating in the bathroom and shower room is controlled by the wall mounted digital controllers in each room.

The hot water is heated automatically by the tank in the bathroom. The wall-mounted digital controller outside the bathroom in the hallway indicates the remaining hot water available.

WASHING MACHINE

The washing machine is located in the recess in the bathroom along with a drying rack and ironing board. The iron can be found in the hallway cupboard.

FUSE BOX

The fuse box is located next to the front door. If you need to access the panel simply remove the slatted panel fitted in front.

SOFA BED

The sofa bed in the living room converts easily by pulling the sofa seat towards you and then pulling the handle. The linen for the sofa bed is stored in the cupboard in the hallway.

GARDEN

The garden is shared by all of the properties in the building. It can be accessed via the stairs to the lower ground floor from the main lobby.

SKI STORE

The ski store is located in the main lobby immediately to the left of the entrance door and again is shared by all of the properties in the building. The other key on the apartment ring will give you access to the store, but please note that belongings are left in this room at your own risk.

SKI BUS

A free ski bus runs throughout the winter season. You will find the bus stop opposite the building on the junction of the main road and the Rue du Mont Lachat.

WHEN YOU LEAVE

Please:

- Switch off the lights
- Make sure electrical appliances are switched off
- Lock all doors and windows
- Leave the property clean and tidy
- Ensure that the dishwasher is empty
- Take out the rubbish
- Sign the guestbook – we'd love to hear about your holiday
- Check you have all your luggage
- Vacate the property by 10am or as otherwise agreed
- Provide us with feedback via your booking website

Have a safe journey home and we hope to see you again soon!

LOCAL ATTRACTIONS

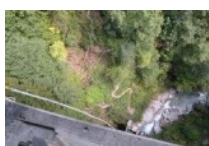
CLIMBING WALL



Pile du Pont Côté Centre-Bourg
Tel: +33 4 50 47 73 40

A climbing wall inside the support of the Saint-Gervais bypass bridge.

BUNGEE MONT BLANC



Viaduc de Saint Gervais
Tel: +33 7 81 51 57 68

Bungee off the bypass bridge – if you dare!

INDOOR ICE RINK



77 Impasse de la Cascade
Tel: +33 4 50 93 53 88

St Gervais has an indoor ice rink that is accessible to all.

LES THERMES DE ST GERVAIS



355 Allée du Docteur Lépinay
Le Fayet
Tel: +33 4 50 47 54 57
Website : <http://www.thermes-saint-gervais.com/>

Thermal Spa

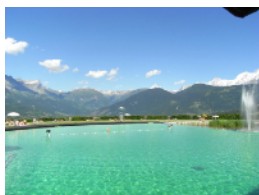
SPORTS CENTRE



Avenue de Miage
Tel: +33 4 50 93 41 83
Website : <http://www.balineae.fr/visites-virtuelles/saint-gervais-les-bains/tour.html>

Indoor swimming pool
Outdoor swimming pool
Tennis
Mini golf

LAKE SWIMMING



Plan-Perret
Combloux - 74920
<http://www.combloux.com/en/activities/summer/water-sport/ecological-mountain-lake.html>

Ecological mountain lake (highly recommended!)
Restaurant

WATER SPORTS



Lac de Passy
<http://www.passyplandeau.com>

Swimming
Sailing
Fitness course
Tree zip-wire course
Crazy golf

LEISURE PARK



Pontet Leisure Parc
Les Contamines
<http://en.lescontamines.com/pontet-leisure-park-1-1.html>

Swimming
Pedalos
Tree course
Rock climbing
Mountain walks
All year ski jumping!

OTHER ACTIVITIES

Information about paragliding, walking, mountain biking, canyoning, etc can be found at <http://www.saintgervais.com> or by visiting the Tourist Information office.

LOCAL AMENITIES

St Gervais town has all amenities that you will require including supermarkets, newsagents, post office, banks, restaurants and bars, etc.

Additional amenities are available in Le Fayet including a hypermarket with petrol station, taxi services, train station, hire car (Herz), etc.

TOURIST INFORMATION

43 rue du Mont Blanc
Tel: +33450477608

MEDICAL

There are doctors in the town with the closest hospital 15mins away in Sallanches.

LOCAL POLICE

The Police Municipale have a small office in Saint Gervais below the Hotel Centre Ville on the right hand side directly across from the church. (Tel: +33450477046)